

# Silicon Analysis in Petroleum and Bio Fuels

From gasoline to ethanol and toluene, Signal® delivers total silicon analysis. Powered by MWDXRF®, Signal is a robust analysis solution for demanding petroleum and industrial environments.

## Applications

- Total silicon analysis in hydrocarbons and bio fuels
- For use in refinery labs, pipeline terminals, additive plants, and inspection laboratories

## Features and Benefits

- LOD: 0.65 ppm at 600 s
- Dynamic Range: 0.65 ppm - 3000 ppm
- Fits on any lab bench
- Touch Screen user interface
- User programmable measurement time: 30-900 s
- No conversion gasses, heating elements, quartz tubes or columns
- 75 W air-cooled excitation tube

## Options

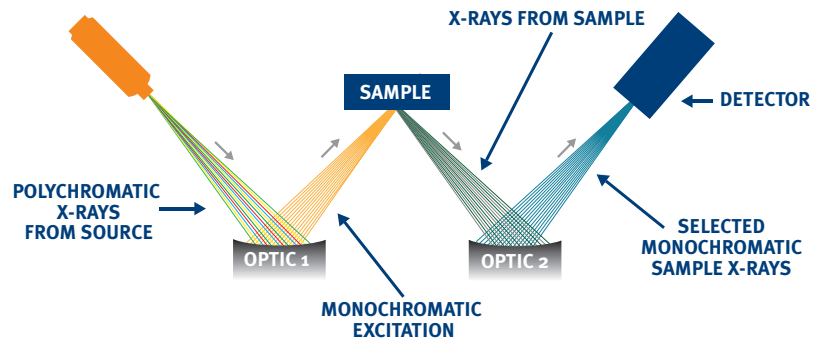
- LIMS data output compatible software

14 28.08  
**Signal**  
Silicon Analyzer

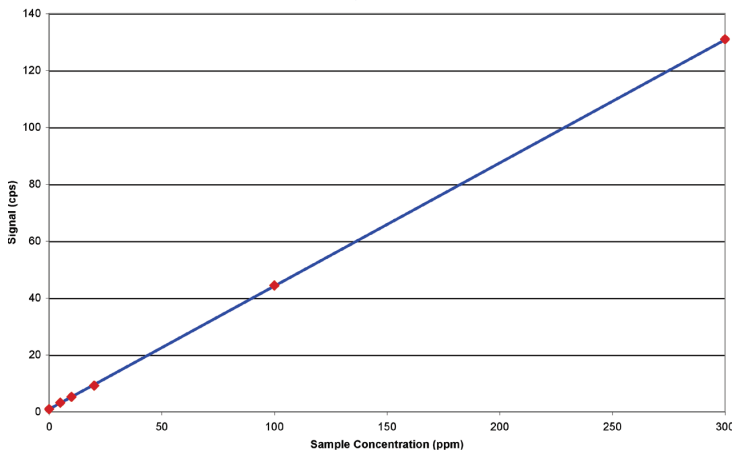


## TRUSTED PRECISION

Monochromatic Wavelength Dispersive X-ray Fluorescence (MWDXRF) utilizes state-of-the-art focusing and monochromating optics to increase excitation intensity and dramatically improve signal-to-background over high power traditional WDXRF instruments. This enables significantly improved detection limits and precision, and a reduced sensitivity to matrix effects. A monochromatic and focused primary beam excites the sample and secondary characteristic fluorescence X-rays are emitted from the sample. A second monochromating optic selects the silicon characteristic X-rays and directs these X-rays to the detector. MWDXRF is a direct measurement technique and does not require consumable gasses or sample conversion.



## Low Range Calibration



## LOW RANGE CALIBRATION

Signal uses a weighted least squares regression which is extremely linear and easy to set up. Typical correlation (R value) is expected to be on the order of 0.999 or better.

## Product Specifications

<b>Model</b>	Signal
<b>Test Method</b>	ASTM D7757
<b>Dimensions</b>	37 cm (w) x 50 cm (d) x 34 cm (h)
<b>Power</b>	100-120 VAC, 47-63 HZ at 6.0 Amps/ 200-240 VAC, 47-63 HZ at 6.0 Amps
<b>Sample Cup Volume</b>	10 ml
<b>Ambient Temperature Requirements</b>	5-40° C (40-104° F)
<b>Dynamic Range</b>	0.65 ppm - 3000 ppm
<b>Measurement</b>	User selectable: 30-900 s
<b>Calibration</b>	8 calibration curves. Automatic and manual calibration functionality

## Precision

Typical repeatability (r) and reproducibility (R) values in gasoline, at 95% confidence. 600 s measurement time.

Silicon Concentration (ppm)	r	R
2	0.4	0.7
5	0.5	0.8
8	0.6	1.0
15	0.8	1.4
100	2	4
500	5	10



15 Tech Valley Drive, East Greenbush, New York 12061 USA  
PH 518.880.1500 FAX 518.880.1510 info@xos.com xos.com

©XOS all rights reserved. Signal and MWDXRF are registered trademarks of XOS.

