

# TWO critical measurements, ONE push of a button, ZERO hassle

Sindie® +CI is a two-in-one instrument enabling trace analysis of both sulfur and chlorine with one push of a button. It is the ideal solution to certify sulfur levels in finished products, assess chlorine for corrosion mitigation, and optimize process parameters.

## Applications

- Total sulfur analysis from ultra low sulfur fuels to crudes
- Total chlorine analysis from aqueous solutions and aromatic products to heavy fuels and crudes.
- For use in refinery labs, pipeline terminals, additive plants and inspection laboratories

## Features and Benefits

- Sulfur
  - LOD: 0.4 ppm at 300 s
  - Dynamic Range: 0.4 ppm to 5 wt%
- Chlorine
  - LOD: 0.3 ppm at 300 s
  - Dynamic Range: 0.3 ppm to 3000 ppm
- Extremely low maintenance: no conversion gasses, heating elements, columns, or quartz tubing
- Automatic sulfur correction for chlorine
- Easy to use
  - Intuitive touch screen
  - Just plug-in and measure
  - Measurement time: 30-900 s
- Fits on any lab bench

## Options

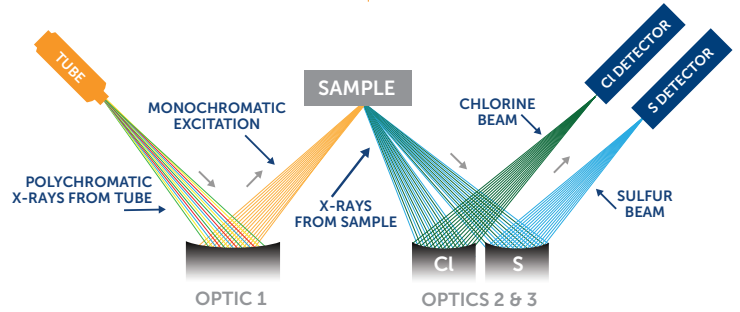
- LIMS data output compatible software



**ASTM D2622, D7039,  
D7536, D4929,  
SH / T 0842**

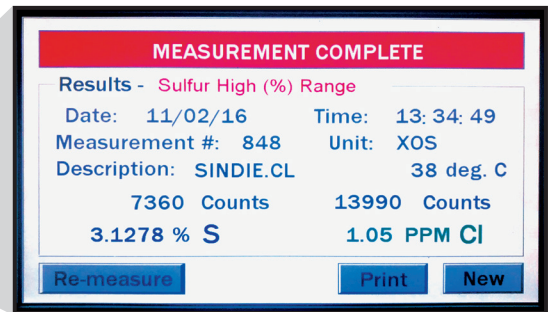
# Trusted Precision

Sindie +Cl is powered by Monochromatic Wavelength Dispersive X-Ray Fluorescence (MWDXRF®): an elemental analysis technique offering significantly enhanced detection performance over traditional XRF technology. Using the industry's most advanced optics, doubly curved crystals, Sindie +Cl achieves a high signal-to-background ratio and delivers very precise measurements of low sulfur and chlorine.



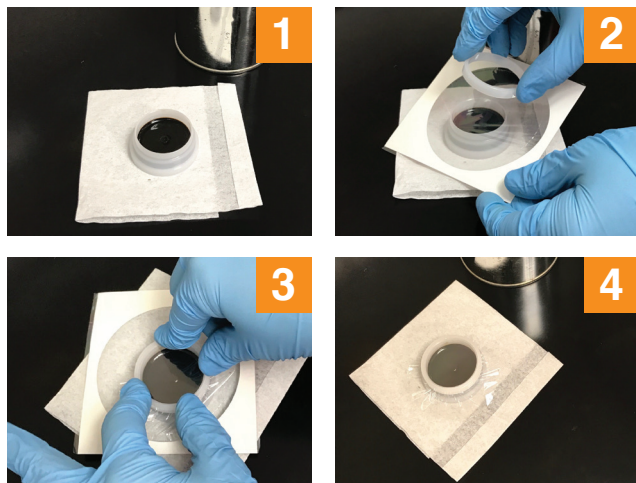
# Two Critical Measurements

Sindie +Cl performs trace analysis of both sulfur and chlorine with one push of a button. You can measure both elements in one sample, or measure each separately by simply inserting a new sample.



# Zero Hassle

Sindie +Cl analyzes a broad range of liquid samples from aqueous solutions to the heaviest of hydrocarbons (e.g. VGO or crude oil), all without the need for dilution, combustion gasses, or other hassles like changing detectors, boats, injectors, furnaces, etc.



## Product Specifications

<b>Test Method</b>	ASTM D2622, D7039, D7536, D4929 and SH / T 0842
<b>Dimensions</b>	37 cm (w) x 50 cm (d) x 34 cm (h)
<b>Power</b>	100-120 VAC, 47-63 HZ at 6.0 Amps/ 200-240 VAC, 47-63 HZ at 6.0 Amps
<b>Sample Cup Volume</b>	10 ml
<b>I/O Ports</b>	Ethernet 10/100 base T, RS232
<b>Ambient Temperature Requirements</b>	5-40° C (40-104° F)
<b>Dynamic Range</b>	Sulfur: 0.4 ppm - 5 wt% Chlorine: 0.3 ppm - 3000 ppm
<b>Measurement</b>	User selectable: 30-900 s
<b>Calibration</b>	8 calibration curves. Automatic and manual calibration functionality



15 Tech Valley Drive, East Greenbush, New York 12061 USA  
 PH 518.880.1500 FAX 518.880.1510 info@xos.com xos.com

©XOS all rights reserved. Sindie +Cl and MWDXRF are registered trademarks of XOS.

